

enterprise

Enterprise Mobile Resource Manager - MRM

Missouri Alliance
for Home Care

Sprint   

enterprise **Core Challenges**

- ▶ Economy is challenging, companies looking to save money
- ▶ High fuel costs, taxes and vehicle maintenance
- ▶ Customers expect increasing levels of service
- ▶ Concerns over employee safety and increasing government compliance



enterprise **Scenario 1**

- ▶ It is 3:30 pm on a Thursday and you have just received a call for a patient who needs to be seen today. You have no idea who is in the area.

Solution A:
You call your best nurse to see if she can handle because you always call on her, you know she will do a good job, and she never complains about the added work

Solution B:
You call the Nurse with the worst morale, as you are bound and determined to make him a TEAM player and it is about time he takes on some added responsibility.

Solution C:
You start calling the nurses on duty in alphabetical order until you find one who can get the job done.

▶ Nurse calls into office because she can't find the patient's home.

Solution A:

Multiple calls made to get correct directions and best route.

Solution B:

Nurse uses her Girl Scout skills to triangulate with the setting sun and the just appearing North Star, to get bearings and find patient's home.

▶ Nurse goes out first time to patient's home and gets a less than settling feeling about the house call.



Solution A: Call for backup.

Solution B: Keep driving.

Solution C: Call anyone to give them last known address and leave instructions as to what to do if I do not check in within the hour.

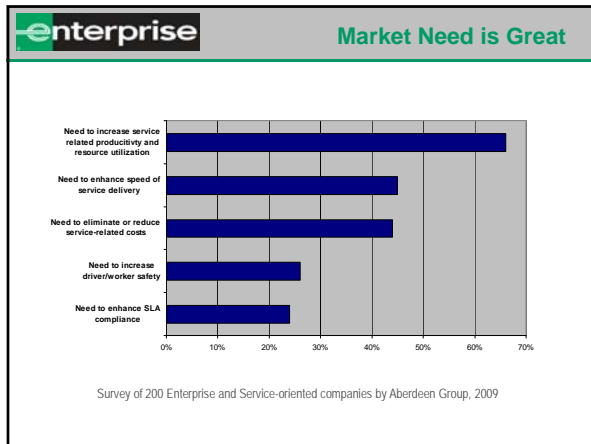
▶ You hear a rumor that some of the nurses are complaining about their clients being all the way across town when there is another nurse that primarily does that area.

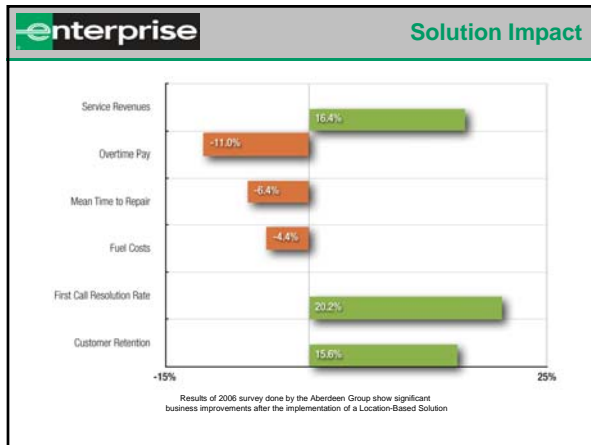
Solution A:

You tell the nurses to sort it out and start letting everyone swap clients any time they want.

Solution B:

You tell the nurses not to worry about it as they are being reimbursed for the use of the personal car or it is a company car and they shouldn't mind.





enterprise **Fuel Savings**

► With the price of fuel increasing, the miles add up.

- 25000 miles / year with a 4.4% savings in miles driven
- 1100 miles saved / 24 mpg = 45.83 gallons
- 45.83 gallons / yr saved X \$3.50/gallon = \$160.40/yr
- \$160.40 x 10 vehicle fleet? = \$1604/yr??


enterprise Productivity

- ▶ 1 additional home visit / week
- ▶ 4 additional home visits / month X \$\$\$

enterprise What is Mobile Resource Manager?


Solution driven by Enterprise fleet customers:

- ▶ Complete more jobs per day
- ▶ Reduce mileage costs
- ▶ Improve customer Service Level Agreements





enterprise Solution Features


- ▶ Real-time vehicle location tracking through GPS-enabled hardware
- ▶ Confirm worker location for start and end times of the work day
- ▶ Manage and dispatch jobs
- ▶ Manage and send/receive messages
- ▶ Audible navigation to new locations



enterprise Solution Components

- 

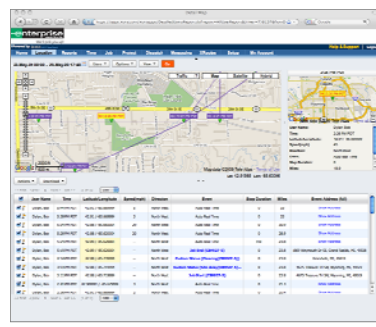
1 GPS Tracking Device connected via Sprint Wireless Network
- 

2 Garmin Nuvi 265W
- 

3 Enterprise Mobile Resource Manager powered by Xora

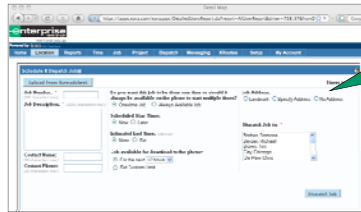
enterprise Never have to ask "Where are you?"

Understand where your workers are, which way they traveled and how long it took them to get there




Maps, Reports, Alerts
Understanding what is happening has never been easier

enterprise Efficiently manage the work load



Quickly dispatch jobs from the web based application



Mobile workers can view a list of jobs dispatched to them

- 100% web-based
- No IT expertise required
- Unlimited web logins
- Free training and support
- Nationwide installation
- On your Sprint bill
- Instant ROI!